

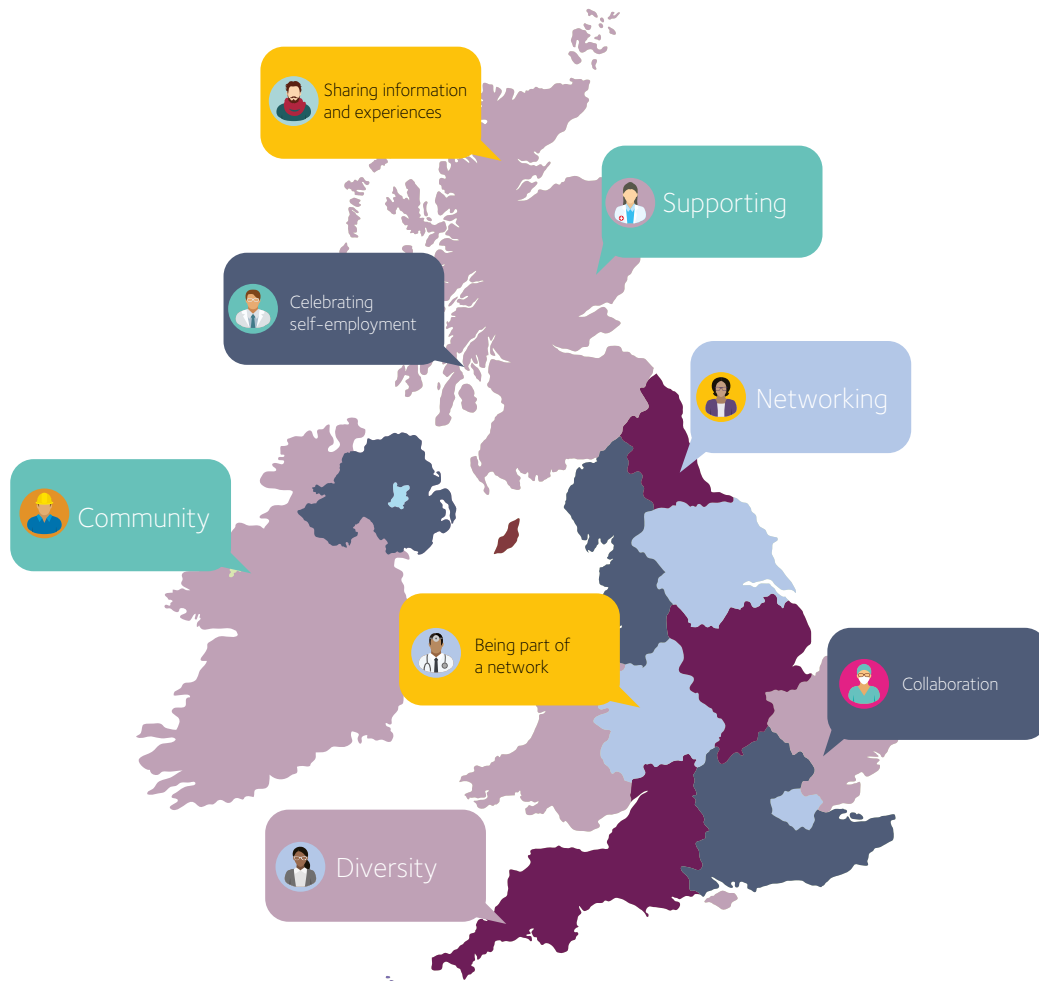
# Members' Forum

# The members forum will...

- provide a direct link between the membership and IPSE
- be more representative of the sectoral and regional diversity of the self-employed
- develop member communities based around interests, sector and location
- be a conduit for open, honest and transparent communications between the Board and the membership

# Members' forum

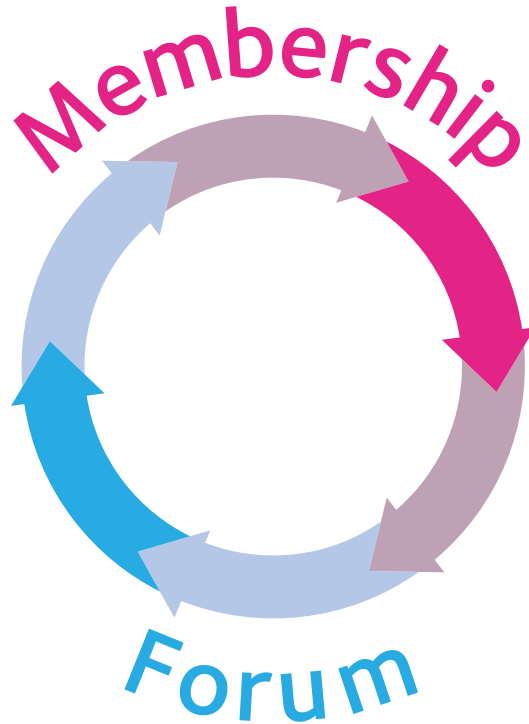
The Members' Forum will bring IPSE and members even closer together making IPSE more democratic and giving us all the opportunity to develop a dynamic and positive dialogue to truly represent and be the voice of the wider membership.



# A two-way street

## IPSE

- Listening to our members
- Sharing our vision
- Delivering great member benefits
- Sharing our success
- Provide networking opportunities



## Members

- Telling us your problems
- Giving us feedback
- Driving the agenda
- Celebrating self-employment

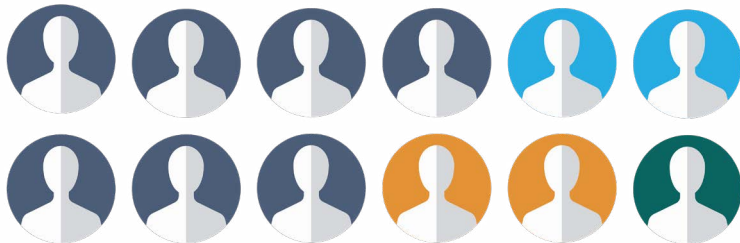
# IPSE Membership Forum - how members can get involved

Members who want to get involved with the Forum will be asked to submit their applications between February and April next year. There will be a criteria set out for membership of the Forum and any member can apply. The final names will be announced on **1st May 2019**, with the first meeting of the Forum later that month.

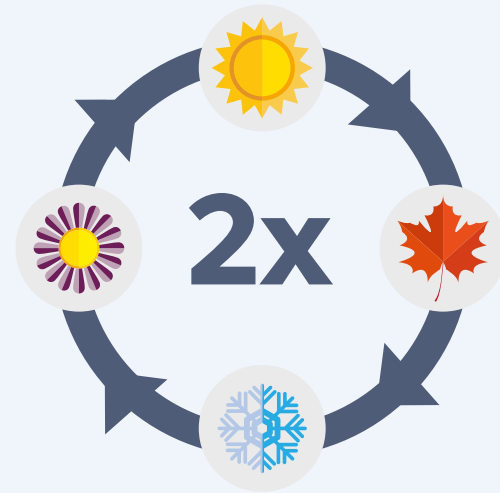
## What will the membership look like?

Members will be selected by an **agreed criteria**. Apart from those who apply, IPSE will reach out to a wide network of members who have been involved in IPSE events such as National Freelancers Day, MyMoney and the IPSE Policy Conference. IPSE will look at where there are large groups of our members in the UK and across all sectors of membership – the Forum will be as **representative** as possible.

There will also be places for friends of IPSE such as key stakeholders and IPSE ambassadors, so they can take our messaging out to their networks.



The Members Forum will consist of 12 representatives of the membership, 3 ambassadors, 2 commercial representatives and 2 other stakeholders. Members of the Forum will **serve for 2 years**.



# Membership Forum Key Principles

**Meet face-to-face twice a year** (May and November), during the working week to ensure this is a constructive and useful business event.

The Forum will also meet more frequently using video conferencing and via the Forum WhatsApp group.



Although Forum members are volunteers, no-one will be out of pocket for serving on the Forum as IPSE will reimburse all reasonable **expenses**.



The Board and the Senior Leadership Team (SLT) will send **topics for discussion** to the members of the Forum in advance, as well as ad-hoc topics which require urgent input. We expect Forum members to consult in their area before giving us feedback.



## Membership Forum Key Principles

IPSE will help the members of the Forum to gather a group of **people in their area** to engage, network and socialise.



There will be at least one member of IPSE's staff based at **HQ** who will help members of the Forum co-ordinate their local groups - they will help book venues, send out invitations and send items for discussion.



We will create a template deck for each member of the Forum to **feedback** consolidated views. In addition, there will be training opportunities to support each member in the effective running of these Groups.



The Members Forum will be a standing **agenda** item at Board meetings: setting topics for discussion, looking at the feedback and responding where necessary.



# Membership Forum Key Principles

There will be 12 different groups created around each Forum member. They will be in different areas of the country reflecting the membership of IPSE. The Groups will be as **diverse as possible** and be open to a wide range of sectors.



If there is a **specific region or sector specific issue** that each Group is interested in, or concerned about, they will be able to bring it to the attention of the Membership Forum. Likewise, if the Board has specific questions about that Group's region they will engage that Group. We will encourage the sharing of best practice and advice to the wider membership. The use of social media will be promoted to keep the Group active.



For wider issues IPSE can survey the **whole membership** and the results can be discussed by the Membership Forum.

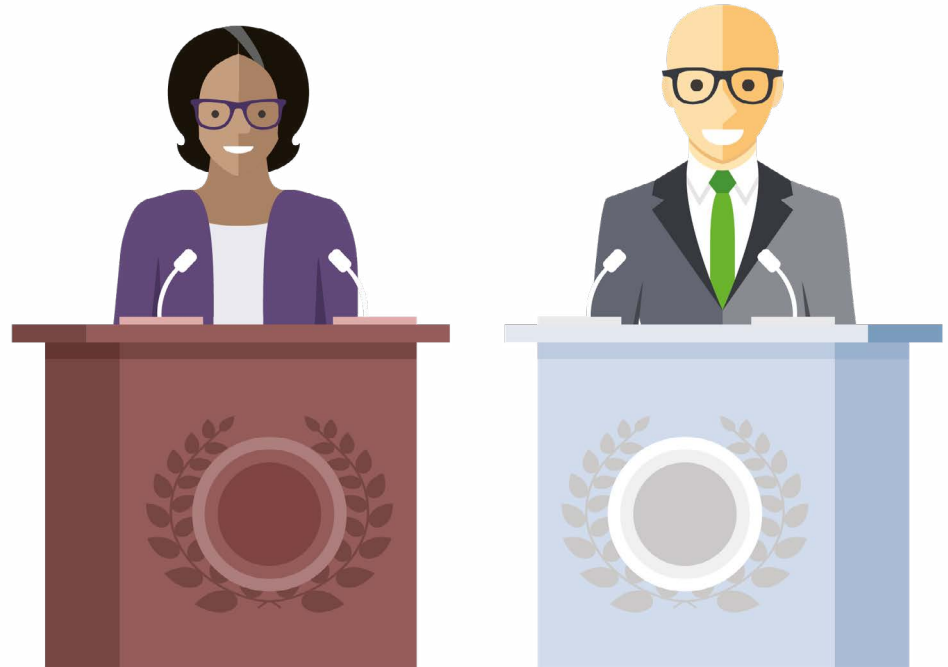


# Membership Forum Key Principles

We will always be looking for more **advocates** for IPSE who can become ambassadors – they will be people who can carry our message into their networks and be consulted on issues too.

---

We will have a range of **ambassadors** across business, media, academics, suppliers and other stakeholders. They will be people who believe in the direction of our organisation and be prepared to speak up on freelancing and self-employment.



# Membership Forum Key Principles

The Membership Forum will be incredibly **effective** at giving the Board and the SLT powerful and useful feedback that can be used in our overall work at IPSE.

Most importantly, being in touch with members in such a direct way ensures that IPSE is aware of both the big issues and the everyday problems facing our members.

